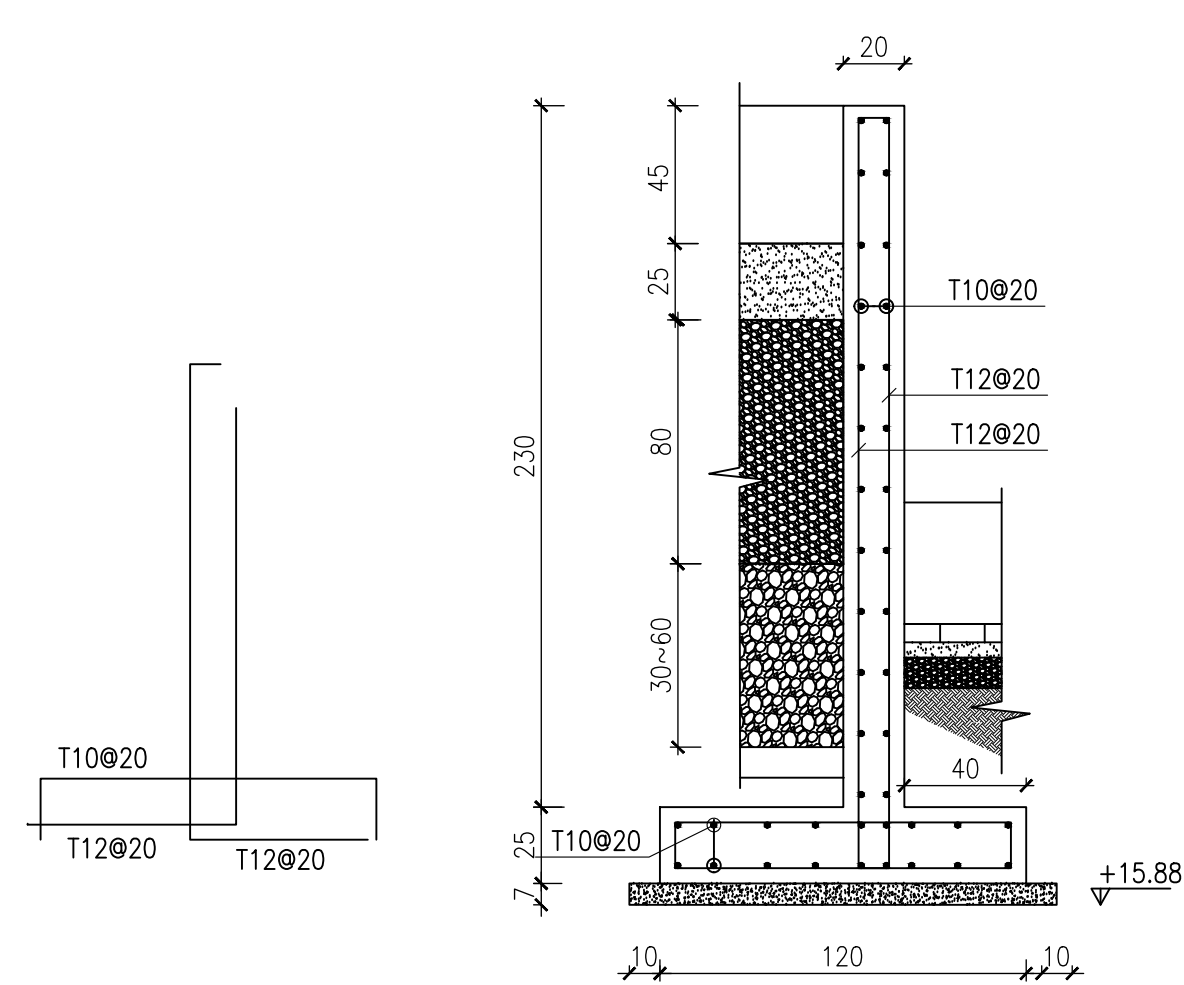
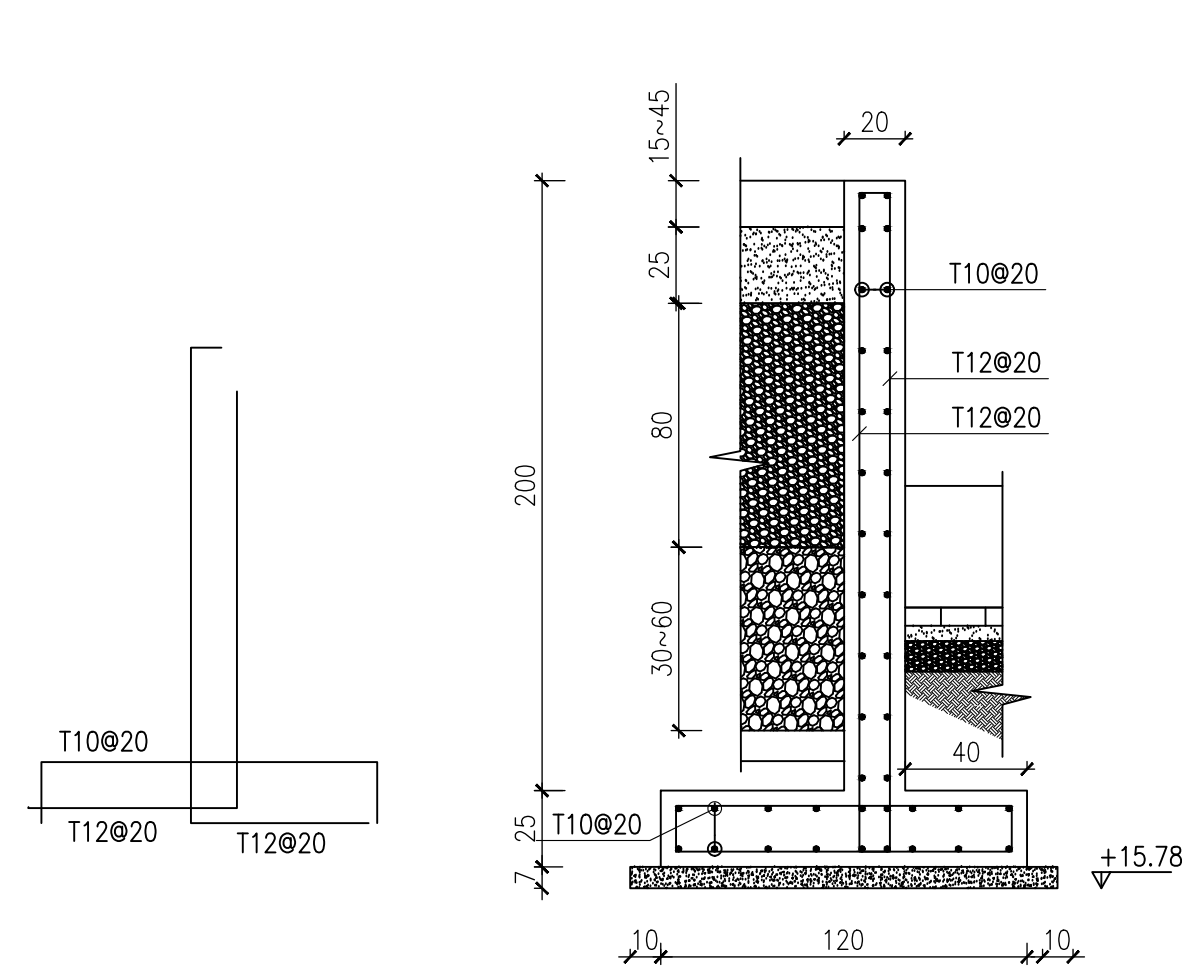
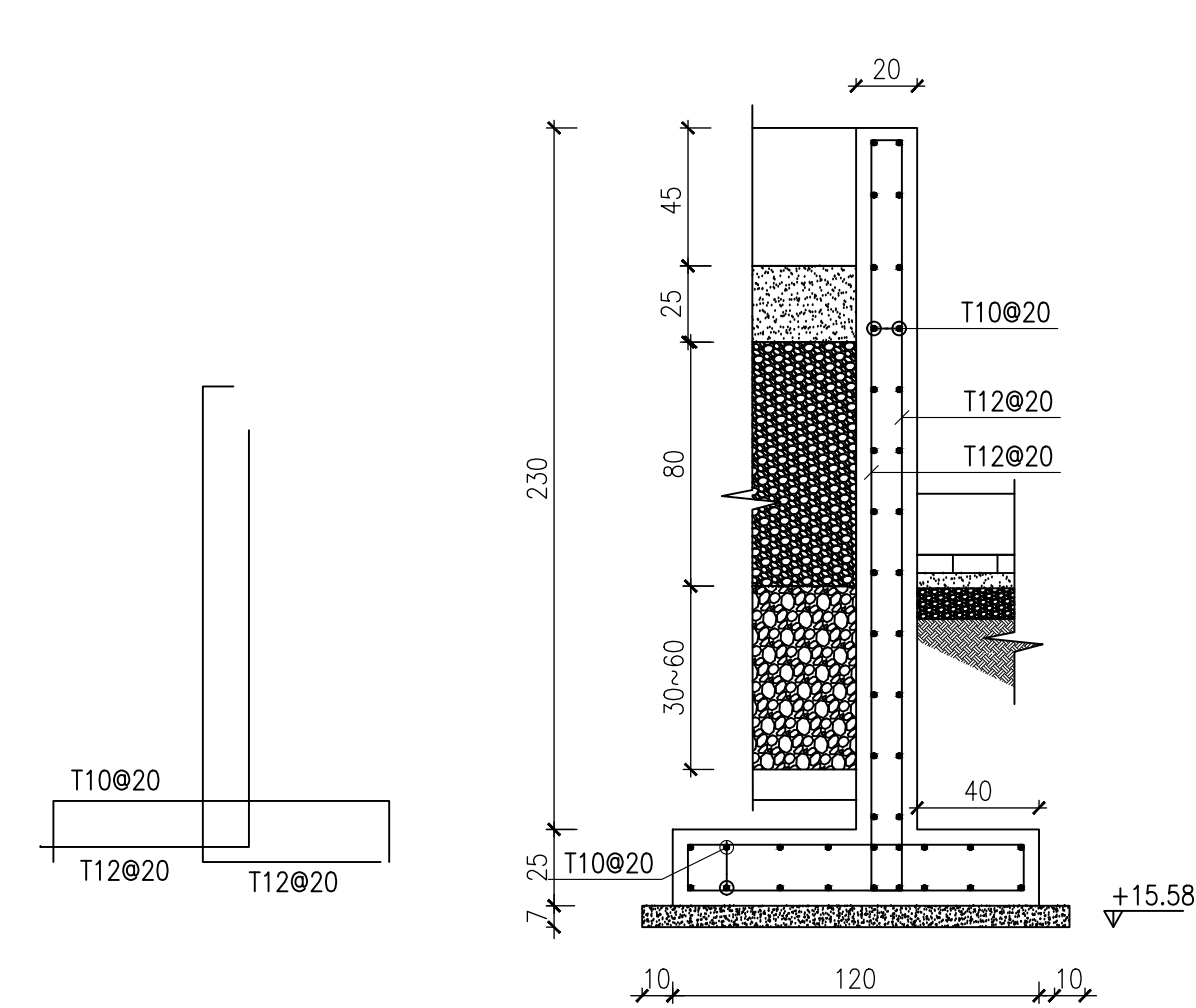
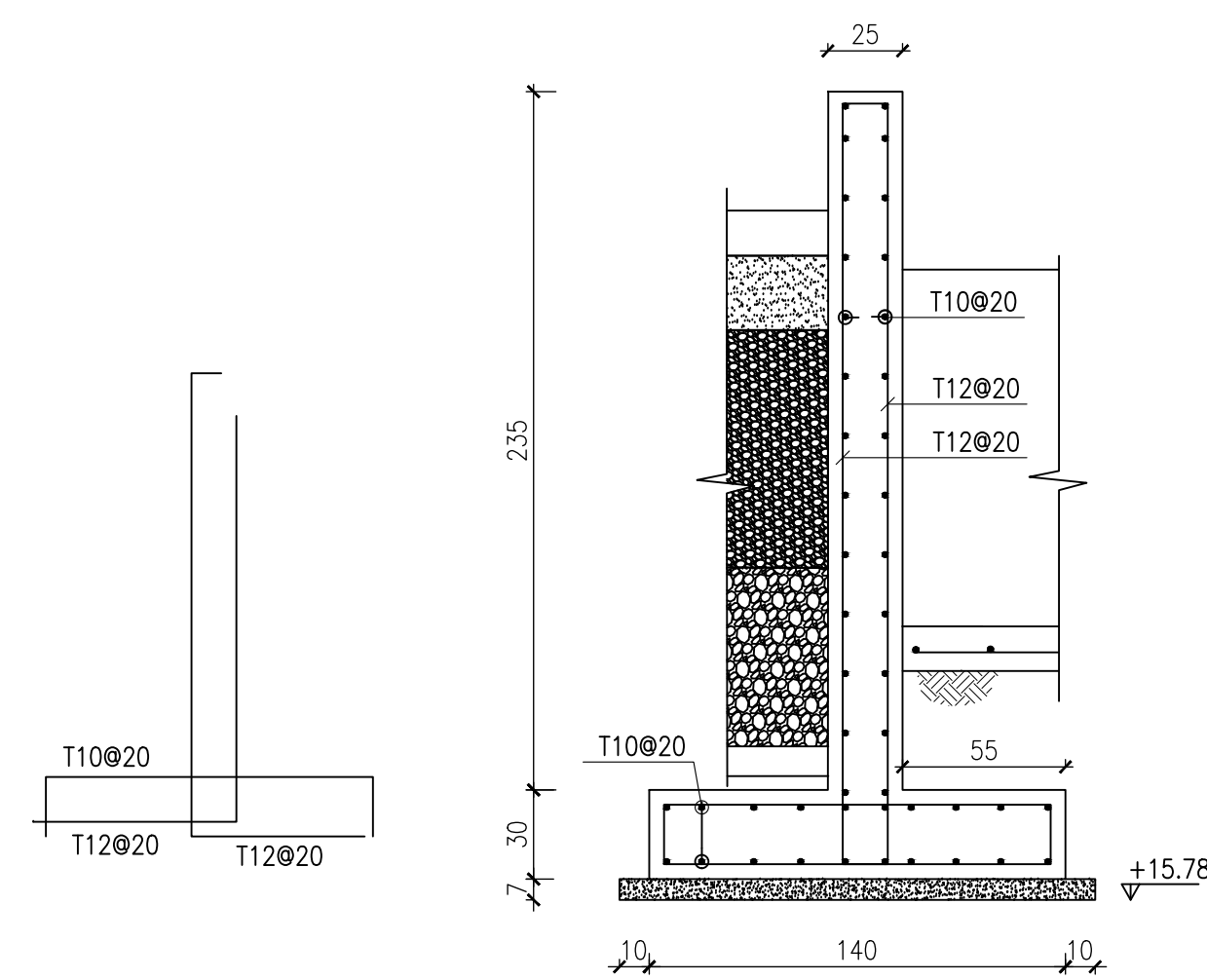
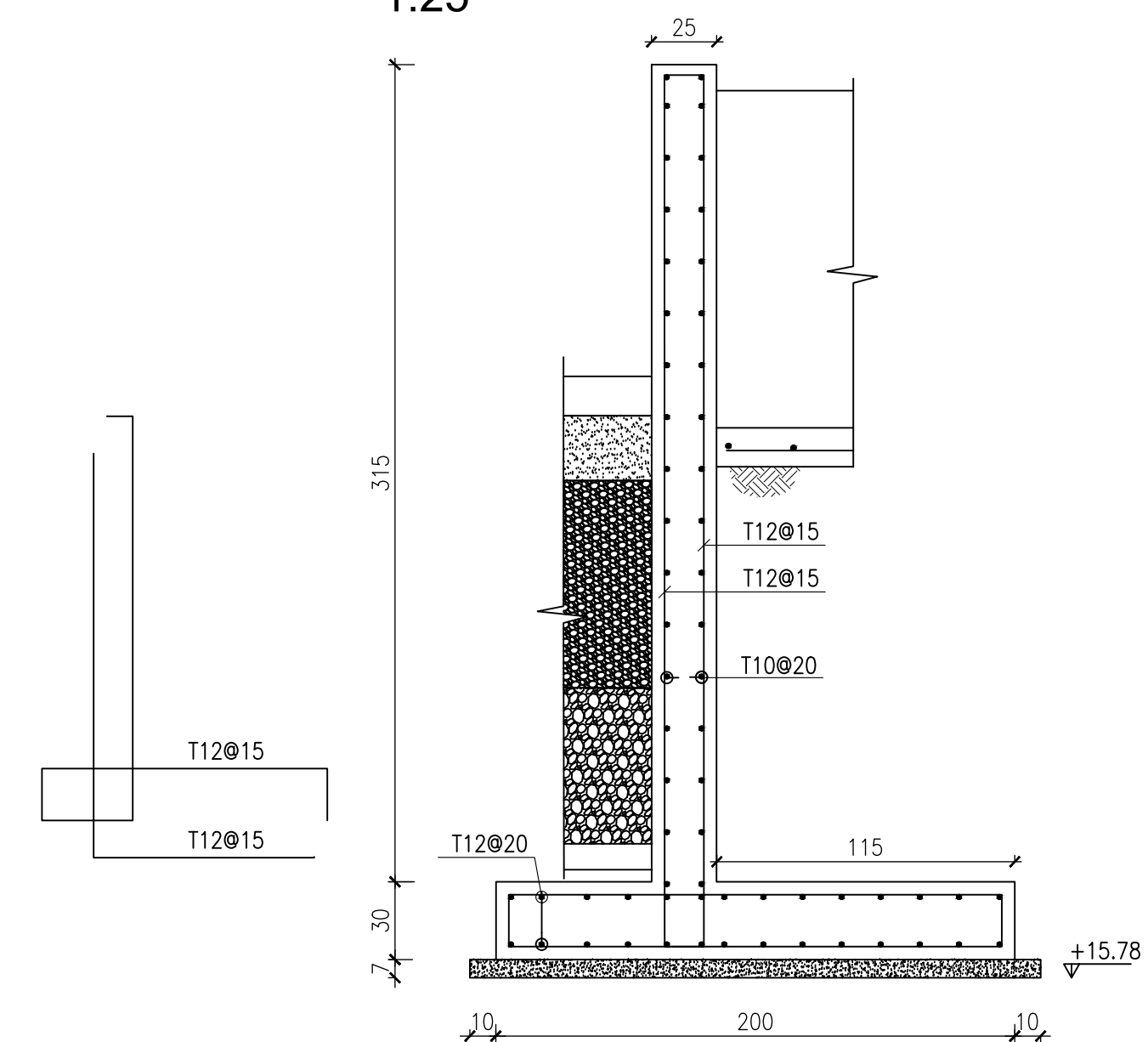
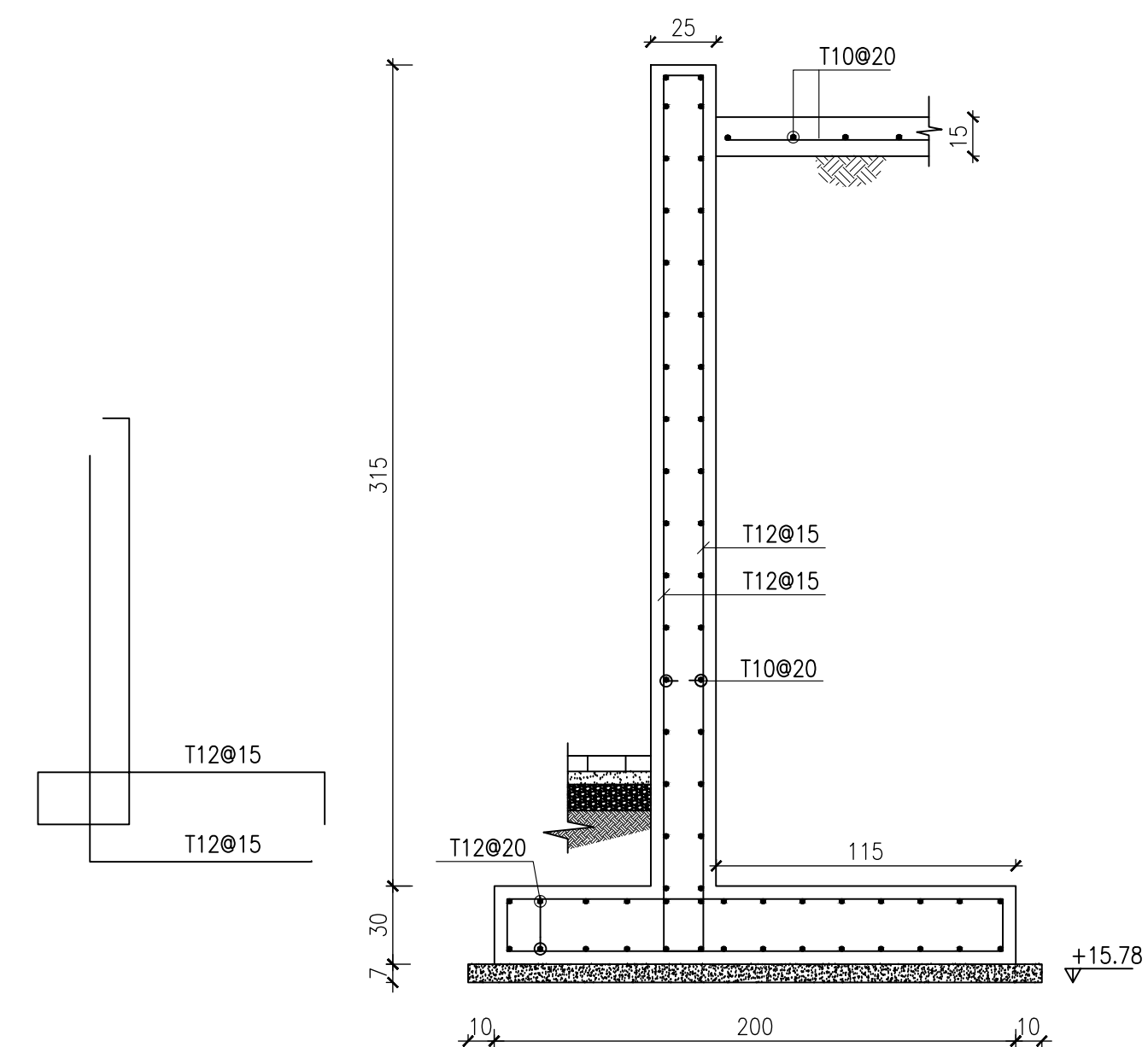
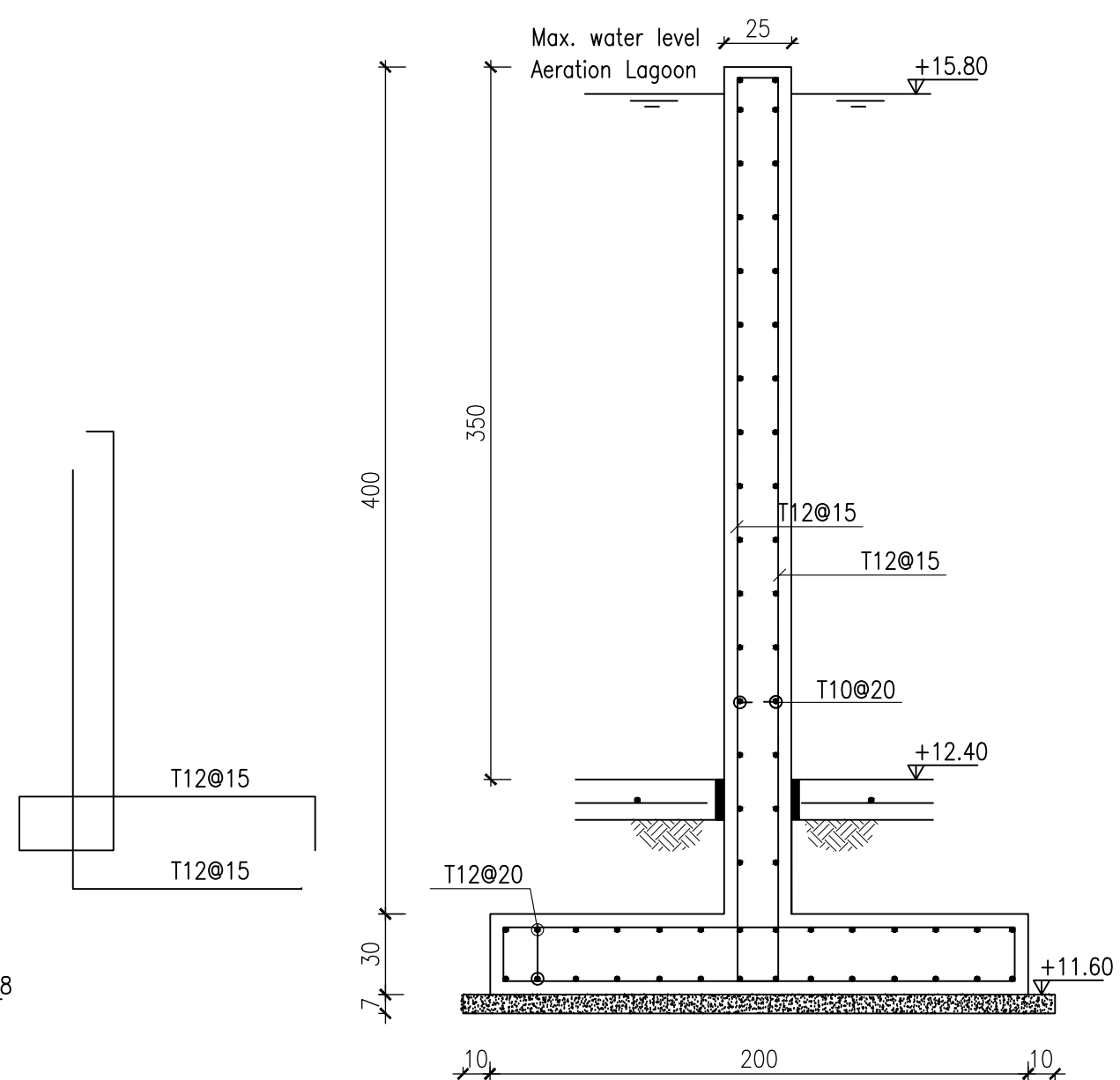
Retaining Wall (RW1) Details  
1:25Retaining Wall (RW2) Details  
1:25Retaining Wall (RW3) Details  
1:25Retaining Wall (RW4) Details  
1:25

### Retaining Wall (RW5) Details

Retaining Wall (RW6) Details  
1:25

### Retaining Wall (RW7) Details

Retaining Wall (RW8) Details  
1:25

Notes:

FUNDED BY



IMPLEMENTED II



الكلية الجامعية للعلوم التطبيقية  
University College of Applied Sciences  
رائدة الابتكار Leader of Innovation



Project Name:

## Reuse of treated wastewater for agricultural use in Al-Mawasi district – Rafah Governorate – Gaza Strip

Project No :

11473/OVERSEAS/TOC

Drawing Title:

Civil Details I

Design

Checke

Drawing NO

---

C2

Scale:

As Shown
----------

Date:

July 2020